

Company profile



Company profile

Index

IMALPAL GROUP	6
THE NUMBERS OF THE GROUP	10
THE GROUP SUSTAINABILITY	12
MECHANICAL AND ELECTRICAL PRODUCTION	14
RESEARCH & DEVELOPMENT	16
ENGINEERING	18
CUSTOMER SERVICE	20
 BUSINESS AREAS	 22
WOOD BASED PANELS	24
PRESSED WOOD PACKAGING	30
PELLETS & ENERGY	34
WOOD RECYCLING AND WASTE TREATMENT	38

IMALPAL Group



The IMALPAL Group is formed from the union of three major corporations, IMAL, PAL and GLOBUS, three well familiar names in engineering, machinery and plants for the wood-based panel and recycling industries for over 50 years, and renowned worldwide for their long experience in the design and construction of complete plants and machinery to convert and transform raw wood-based materials and all kinds of waste in general into new ecological and eco-sustainable finished products. PSP, PMI and ITALSORT joined the group respectively in 2015, 2017 and 2020, completing the range of products.

IMAL, PAL and GLOBUS: three well familiar names in engineering machinery and plants for the wood-based panel and recycling industries for over 50 years.

Today the IMALPAL Group has further expanded its specialization and leadership into broader fields, through new acquisitions and the continual research and development of new technologies, many of which have been patented.

The Group is able to offer tailor-made and turnkey solutions for the manufacture of machinery or complete plants for the

production of PB\SPB, MDF\HDF, OSB\LSB\FOSB panels, insulation board, pellets, pressed pallets, pallet blocks, biomass energy plants, drying systems and power generation, as well as the treatment of industrial and municipal waste such as plastic, sludge and wood to maximize material recovery for the production of energy and minimize the waste to landfill sites.

The systems and equipment manufactured by the IMALPAL Group are renowned worldwide for their top-quality construction and design, advanced software and process control and continual innovations to improve product quality and cut production costs.

Over the last ten years however, in their constant endeavour to evolve and progress, the Group has adapted and applied their long experience, know-how and innovative solutions to design and develop technical solutions that are the Best Available Technologies acknowledged on a worldwide scale.

The Group is able to offer tailor-made and turnkey solutions for the manufacture of machinery or complete plants.



Imal, Modena



Pal, Ponte di Piave - Treviso



Globus, Galliate - Novara

Our mission

The IMALPAL Group accompanies and guides each and every customer through the technological innovation process to achieve the best performance and production quality from the plants.

Each new project evolves from the close collaboration between the IMALPAL Group's team of experts and the customer's experts to ensure both versatility and a successful outcome. Service and post sales assistance is the Group's strong point which, thanks to its trim organization and great flexibility can assist customers rapidly any time.

| Fully customer oriented Group.

A fully customer-oriented Group knows exactly what customers need and always makes every effort to meet their requests.

Our vision

The IMALPAL Group does not simply offer machinery and plants, it also designs and develops recycling and upcycling systems to protect and safeguard the environment.



The numbers of the Group

1970

FOUNDATION

9

COMPANIES

3

RESEARCH AND
DEVELOPMENT
LABORATORIES



11

MANUFACTURING
SITES

50.000 m²

OFFICE BUILDINGS AND
PRODUCTION FACILITIES
EXTENDING OVER





120

OVER 120
PATENTS

25.000

OVER 25.000 EQUIPMENT
REFERENCES WORLDWIDE

145

BUSINESS RELATIONS
WITH OVER 145 NATIONS
AROUND THE WORLD.

5

BUSINESS RELATIONS
IN 5 CONTINENTS



The Group Sustainability

Economic Sustainability

210 Over 210 million of total revenue in 2021

100% Purchases made 100% from European suppliers, 97% of which from the Italian supply chain

3⁰⁰⁰ Over 3000 customers worldwide recycle all kinds of waste with our machinery and equipment

35 35 people involved in R&D approximately for 60,000 working hours per year

Social Sustainability

96% 96% of the employees have permanent contracts

95% 95% of the employees have been working for the IMALPAL Group for over 5 years

4⁰⁰⁰ Over 4000 hours of work safety training

360° 360° Support for social, cultural artistic and sports initiatives in the community

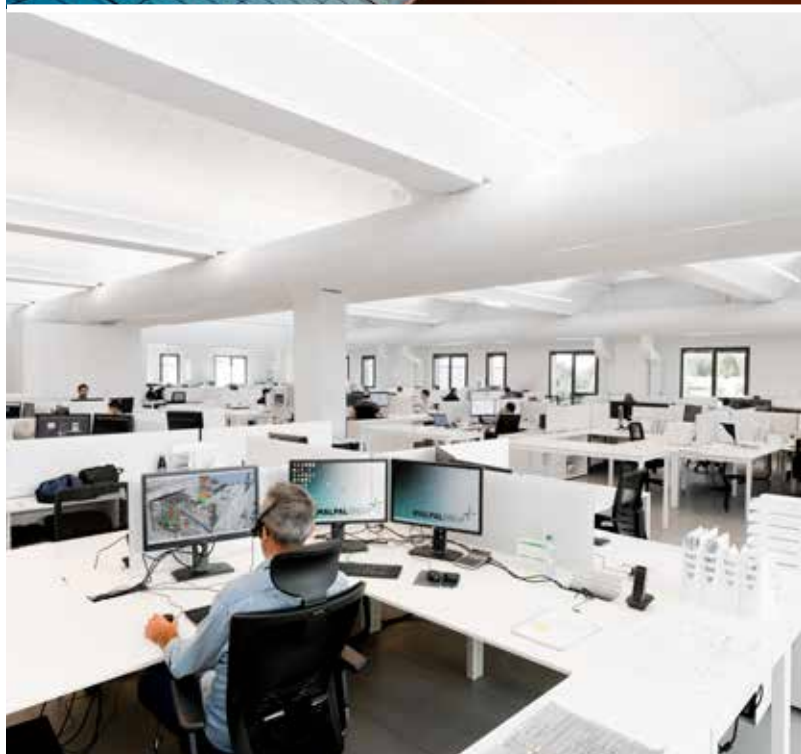
Environmental Sustainability

100% Electricity autogenerated 100%
from renewable sources

60 IMALPAL Group recycling plants
recover around 60,000,000 tons of
wood, plastic, waste worldwide
annually, avoiding 3,000,000 of CO²

9,000 more than 9000 m² of
photovoltaic panels installed

98% 98% of waste
recycled



Mechanical and Electrical Production

11 **production** **facilities**

The IMALPAL Group's 11 production facilities in Italy are utilized to design and produce in-house all the technologies, process equipment and automation software.

The in-house mechanical and electrical production guarantees a direct and prompt control of the quality throughout each stage of the manufacturing process.



Research & Development

One of the keys to the Group's success is the major investments made in R&D. This department, in the specially dedicated R&D facility and run by a team of highly-qualified engineers with great inventive capacity, is constantly at work to design innovations for both existing and future projects, aimed at improving performance, reducing running costs, reducing maintenance with the application of special materials, optimising plant layout with a view to obtaining maximum yield at minimum cost and optimising production processes.

One of the major targets is to valorise every kind of waste to find up-to-date upcycling solutions to be implemented in all the production processes

The engineers of the Group's R&D division also collaborate in close conjunction with several Italian University Research laboratories, and the encouragement of this kind of collaboration, along with their annual investment policy, enable the Group to retain its reputation as an avant-garde manufacturer in this industrial sector.

Our Smart Lab is a complex of 3 research centres

The IMALPAL Group has three advanced research laboratories with production lines to simulate true scale technological processes in all fields:

1. **Material and Waste treatment research:** cleaning, recycling, chipping and analysis of all kinds of raw material available
2. **Process and Production:** drying, blending and pressing for industrial production using all kinds of raw material
3. **Technical and technological analysis** of the products and compliance with international standards carried out in a fully equipped laboratory with over 50 testing units made by the IMALPAL Group.

A highly qualified team, in all the laboratories, performs tests on numerous tons of raw materials sent every year by customers from all over the world.

Test results are computer analysed, recorded and used to design innovations, optimize our industrial equipment and to recommend tailor-made solutions for special applications to our customers.

The IMALPAL Group has three advanced research laboratories with production lines.



MATERIAL AND WASTE TREATMENT RESEARCH CENTER



PROCESS AND PRODUCTION RESEARCH CENTER



TECHNICAL AND TECHNOLOGICAL RESEARCH CENTER

Engineering

From project to construction

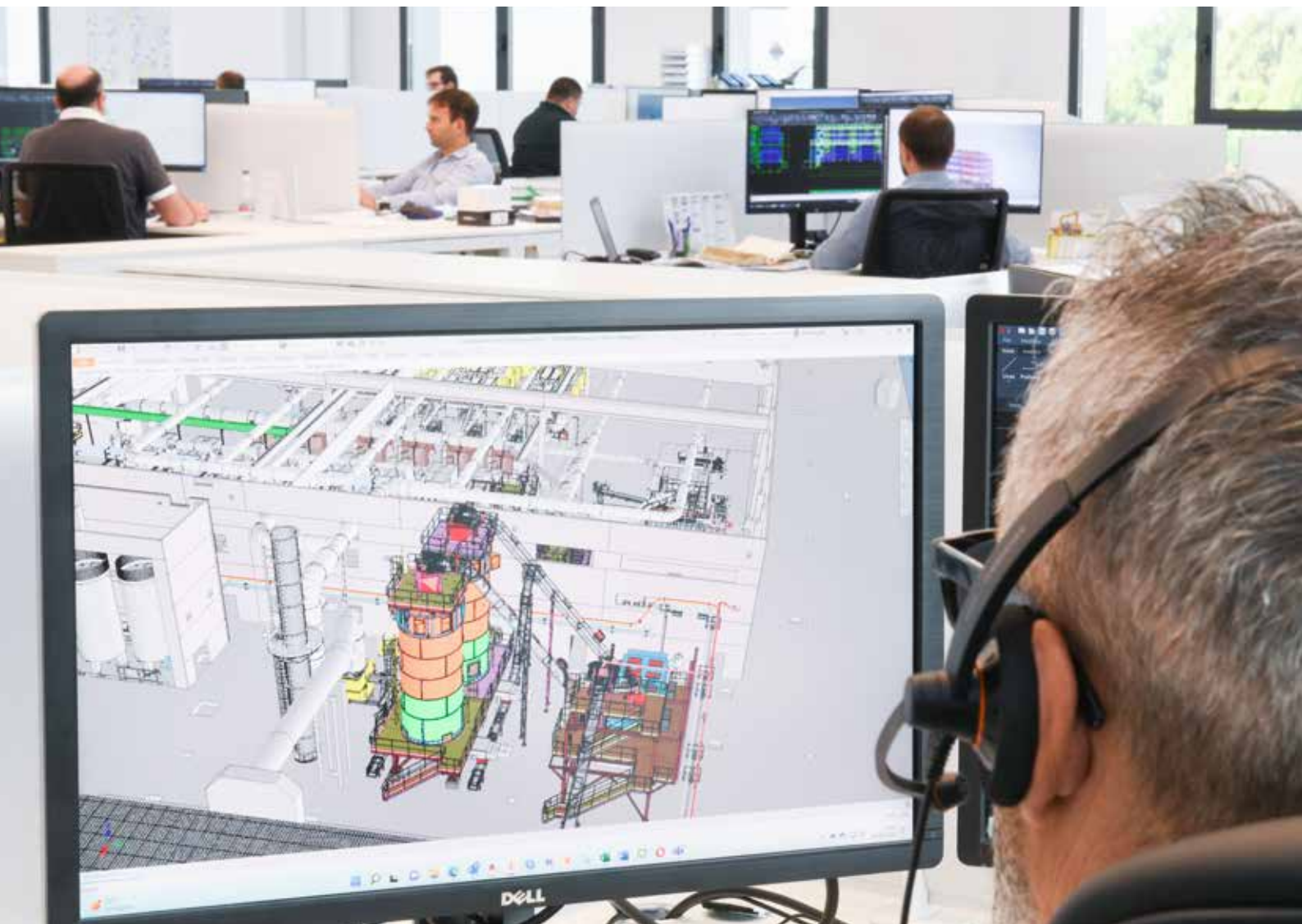
The proven expertise of our team, together with the vast experience matured over the years, and hi-tech support tools used by the technical personnel enable us to provide full engineering for new plants or upgrades of existing installations.

The engineering department has over 100 engineers, producing the 3D design of each machine, plant or production facility.

The most modern software and hardware technologies are adopted to produce a 3D scan of existing plants and to engineer the tailor-made plant.

The IMALPAL Group is the ideal partner and leader for the construction of complete plants with an EPC guarantee and Turnkey, all over the world.

**IMALPAL Group
provides full engineering
for new plants or
upgrades of existing
installations.**



Customer service

Service, Remote on-line assistance & training courses

Fully customer-oriented service comes first and foremost for a team like ours.

This is why our 24/7 service staff never takes a break and is constantly motivated to minimize reaction time.

SERVICE IS EXTENSIVE AND DIVERSIFIED AND INCLUDES:

- logistics for reliable packaging and shipping
- assembly, start-up and fine tuning
- before and after sales assistance
- spare parts
- on-line and on-site assistance

Our subsidiary offices located around the world guarantee closer contact and faster customer service. The Group is equipped with an extremely modern remote service technology to provide an immediate response and on-line assistance which has already been successfully installed by numerous customers.

SEMINARS AND TRAINING

Sharing our knowledge with our customers is essential.

Our engineers and technicians regularly attend courses so that they in turn can fine tune their customer training ability.

Furthermore, courses and seminars are set up to enrich your staff's knowledge of our equipment, to ensure that full use is made of our systems and that the very best performance is achieved.

The Group is equipped with an extremely modern remote service technology.



Engineering, machinery and complete plants

4 business areas

The Group is well known all around the world for the engineering and the supply of machinery and complete plants for the production of wood based products and various value added products.

IMALPAL Group is specialized in the supply of high technological solutions for four main type of plants and productions:

- **Wood based panels**
- **Pressed wood packaging**
- **Pellets & Energy**
- **Wood Recycling and Waste Treatment**

Through the specialized IMALPAL Group laboratories, technological solutions have been designed to give new life to production waste from various product sectors and so in addition to wood and plastic, value is given to bagasse, vegetable fibres, banana, coconut, straw, palm fronds, rice husk, pruning waste, sludge, and so on.

Recycling means using every kind of waste available to reduce and minimize the utilization of natural raw materials. Product quality depends on the preparation area. This is why the Group has invested heavily in this direction to design integrated high-tech wood\plastic preparation solutions that have become references in processing plants worldwide.

Recycling means using every kind of waste available to reduce and minimize the utilization of natural raw materials.

Wood based panels

PB/SPB
MDF/HDF
OSB/LSB/FOSB
INSULATION BOARDS

Pressed wood packaging

PALLET BLOCKS
PRESSED PALLETS
STRINGERS & BEAMS

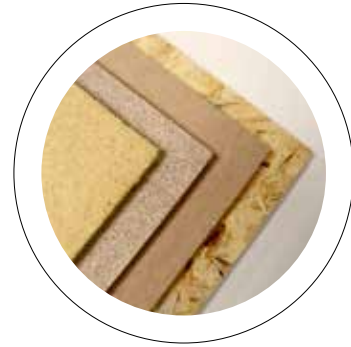
Pellets & Energy

WOOD PELLETS AND BLACK PELLETS
THERMAL AND ELECTRIC ENERGY
GREEN FUELS
DRYING

Wood Recycling and Waste Treatment

WOOD RECYCLING
PLASTIC RECYCLING
SLUDGE RECYCLING
CUSTOMIZED SOLUTIONS FOR RECYCLING

Wood based panels



PB/SPB



OSB/LSB/FOSB



MDF/HDF

INSULATION
BOARDS

Process Equipment

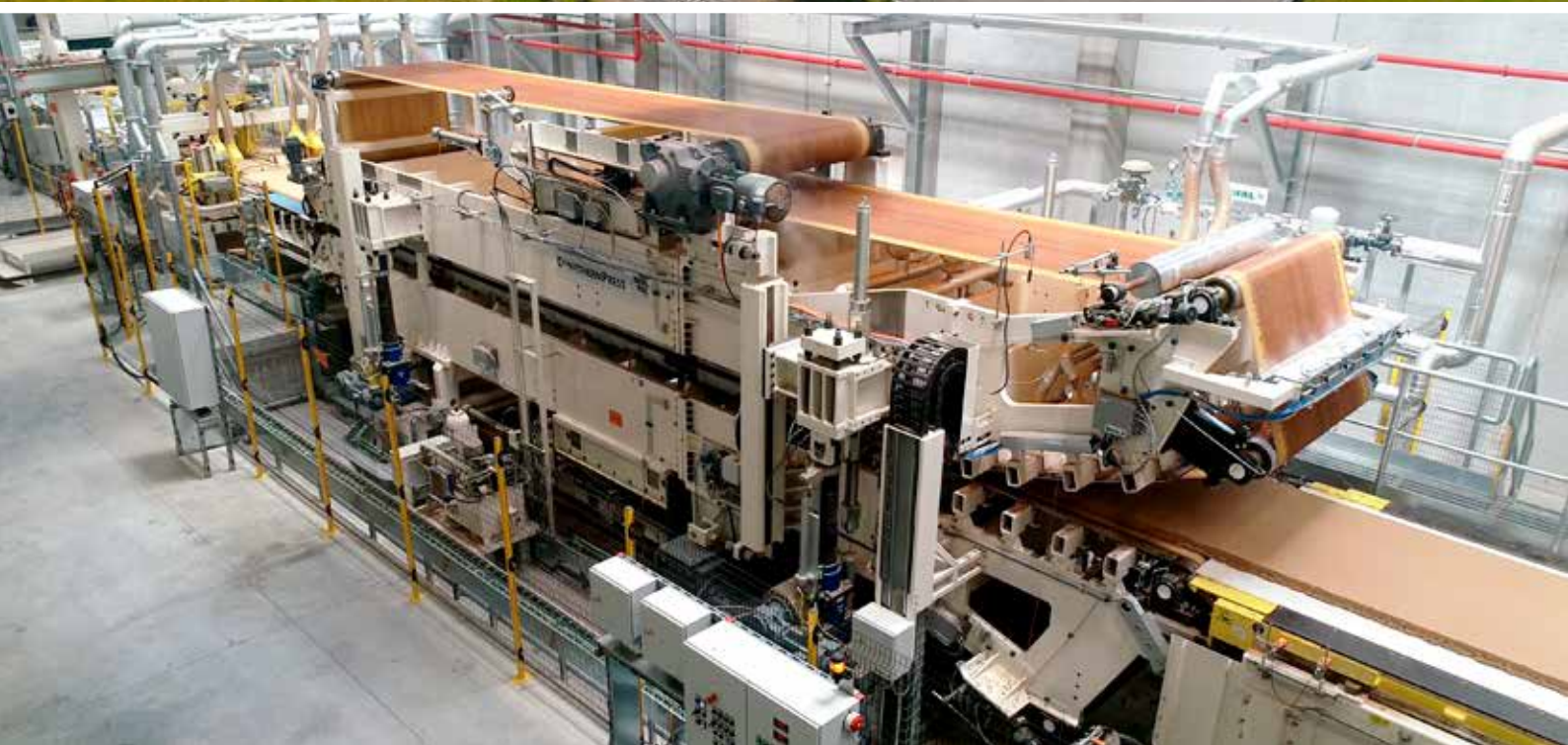
FEEDERS
CRUSHERS
DEBARKERS
CHIPPERS
EXTRACTORS
SILOS & STORAGE
ROLL SCREENS
CHIP CLEANERS
OPTICAL AND X-RAY SEPARATORS
METAL REMOVERS
DRYING
FLAKERS & REFINERS

SCREENS
AIR SIFTERS
DENSIMETRIC SEPARATORS
METERING BINS & SCALES
RESINATION SYSTEMS
DOSING SYSTEMS
FORMING & PRESS
ON-LINE QUALITY CONTROLS
ON-LINE SAFETY CONTROLS
LABORATORY EQUIPMENT
HANDLING & PACKAGING
FILTERS & SCRUBBERS

Services

AUTOMATION
ELECTRIC CONTROL
ENGINEERING

SUPERVISION AND TRAINING
TURNKEY INSTALLATION
EPC PROJECT MANAGEMENT











Pressed wood packaging



PALLET
BLOCKS



PRESSED
PALLETs



STRINGERS
& BEAMS

Process Equipment

FEEDERS
CRUSHERS
DEBARKERS
CHIPPERS
EXTRACTORS
SILOS & STORAGE
ROLL SCREENS
CHIP CLEANERS
OPTICAL AND X-RAY SEPARATORS
METAL REMOVERS
DRYING
FLAKERS & REFINERS

SCREENS
AIR SIFTERS
DENSIMETRIC SEPARATORS
METERING BINS & SCALES
RESINATION SYSTEMS
DOSING SYSTEMS
FORMING & PRESS
ON-LINE QUALITY CONTROLS
ON-LINE SAFETY CONTROLS
LABORATORY EQUIPMENT
HANDLING & PACKAGING

Services

AUTOMATION
ELECTRIC CONTROL
ENGINEERING

SUPERVISION AND TRAINING
TURNKEY INSTALLATION
EPC PROJECT MANAGEMENT







Pellets & Energy



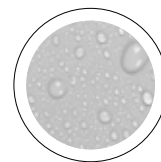
WOOD PELLETS
AND BLACK PELLETS



GREEN
FUELS



THERMAL AND
ELECTRIC ENERGY



DRYING

Process Equipment

FEEDERS
CRUSHERS
DEBARKERS
CHIPPERS
EXTRACTORS
SILOS & STORAGE
ROLL SCREENS
CHIP CLEANERS
OPTICAL AND X-RAY SEPARATORS
METAL REMOVERS
DRYING
FLAKERS & REFINERS

SCREENS
AIR SIFTERS
DENSIMETRIC SEPARATORS
METERING BINS & SCALES
ON-LINE QUALITY CONTROLS
ON-LINE SAFETY CONTROLS
LABORATORY EQUIPMENT
HANDLING & PACKAGING

Services

AUTOMATION
ELECTRIC CONTROL
ENGINEERING

SUPERVISION AND TRAINING
TURNKEY INSTALLATION
EPC PROJECT MANAGEMENT







Wood Recycling and Waste Treatment



WOOD
RECYCLING



SLUDGE
RECYCLING



PLASTIC
RECYCLING



CUSTOMIZED
SOLUTIONS FOR
RECYCLING

Process Equipment

FEEDERS
CRUSHERS
EXTRACTORS
SILOS & STORAGE
ROLL SCREENS
CLEANERS
OPTICAL AND X-RAY SEPARATORS
METAL REMOVERS
FLAKERS & REFINERS
SCREENS
AIR SIFTERS
DENSIMETRIC SEPARATORS

METERING BINS & SCALES
ON-LINE QUALITY CONTROLS
ON-LINE SAFETY CONTROLS
LABORATORY EQUIPMENT

Services

AUTOMATION
ELECTRIC CONTROL
ENGINEERING

SUPERVISION AND TRAINING
TURNKEY INSTALLATION
EPC PROJECT MANAGEMENT







Contacts



IMAL SRL

VIA R. CARRIERA, 63
I - 41126 SAN DAMASO (MO) - ITALY
Ph.: +39 059 465 500
Fax: +39 059 468 410
info@imal.com



PAL SRL

VIA DELLE INDUSTRIE, 6/B
I - 31047 PONTE DI PIAVE (TV) - ITALY
Ph.: +39 0422 852 300
Fax: +39 0422 853 444
info@pal.it



GLOBUS SRL

V.LE FAUSER, 3
I - 28066 GALLIATE (NO) - ITALY
Ph.: +39 0321 862 702
Fax: +39 0321 866 060
info@globussrl.it



PMI SRL

VIA A. MALIGNANI, 25
I - 33050 CASTIONS DI
STRADA (UD) - ITALY
Ph.: +39 0432 768 440
Fax: +39 0432 769 067
info@pmi-srl.it



PSP MACHINERY SRL

VIA NICOLÒ COPERNICO, 52
I - 37023 STALLAVENA DI
GREZZANA (VR) - ITALY
Ph.: +39 366 689 2355
info@pspmachinery.it



ITALSORT SRL

VIA D'ORMENT, SNC
I - 33042 Buttrio UD - ITALY
Ph.: +39 0432 184 4149
info@italsort.com

